



BARYL™ PANEL MOUNT SOCKET

Splash Proof 12V Power Socket Installation Instructions

What is in the kit:

- 1- Baryl Panel Mount Socket Assembly
- 6- Cable Ties

What you need:

- Your vehicle service manual
- Common hand tools



WARNING

Baryl Power Ports are intended for use with 12 Volt accessories only! Connection to accessories intended for other voltages can cause severe damage to the connected device which could in turn result in personal injury. Consult the accessory technical specifications for correct operating voltage.



CAUTION

Additional electrical equipment can overload the vehicle electrical system and cause unsafe operation conditions. If your combined electrical accessories consume more electrical current than your vehicle's charging system can produce, the electrical consumption can discharge the battery leading to vehicle electrical system damage.

Baryl power ports handle 7.5A maximum current load and are fused accordingly.



WARNING

The service manual for your vehicle is required for safe and correct installation of the Baryl Socket and cable. The operator's safety depends on the correct installation of the Baryl Socket and cable routing. If the procedure is not within your capabilities or you do not have the correct tools, have a qualified technician perform the installation for you. Incorrect installation of the Baryl Socket and cables could result in death or serious injury.



WARNING

To prevent accidental vehicle startup, which could cause death or serious injury, disconnect battery cables (negative cable first) before proceeding.

Disconnect negative (-) battery cable first. If positive (+) battery cable should contact ground with negative (-) cable connected, the resulting sparks can cause a battery explosion, which could result in death or serious injury .

3BR Powersports, LLC

PO Box 2798

Saratoga, CA 95070

www.3brpowersports.com

Patent Pending

Be sure to read and understand these instructions through to the end **BEFORE** starting the assembly.

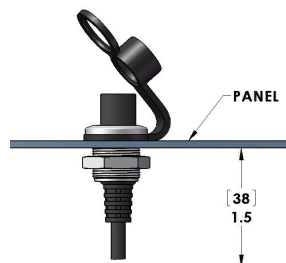
Disconnect the Battery

Always wear safety glasses when connecting or disconnecting battery cables.

1. Refer to your vehicle service manual to access the battery.
2. Disconnect the battery, negative (-) cable first.

Locate the Baryl Panel Mount Socket

1. Determine the location for your Baryl Socket. Be sure that there is at least 1 1/2" (38mm) clearance behind the panel to allow for cable routing.



2. Drill a 5/8" hole in the panel. We show the hole being drilled on a drill press but a hand drill works just as well. If you are drilling in place, be sure that there is no wiring or other components behind the panel where the drill may strike them can cause damage or injury.

Hint: a step drill is our preferred way to make holes in thin materials like panel plastic or sheet metal. Each step acts as a pilot for the next step size so the finished hole is round and smooth. A hole saw also works fine.

3. Deburr the hole.
4. Install the Baryl Panel Mount socket being sure that the seal cap is seated properly on the panel bushing boss and is oriented in your preferred position.
5. Secure the assembly with the panel nut provided.

Plan your cable routing.

Hint: follow the factory cable harness whenever possible. Vehicle manufactures pay their engineers big bucks to route harnesses in the safest, most efficient manner. Take advantage of that expertise!

1. Begin routing the cable. *Hint: If the cable has to pass through frame or bodywork openings, route from the battery end to the socket location. The Baryl Socket connector is considerably smaller than the fuse holder making it easier to thread through openings.*
2. Refer to the vehicle service manual if any other vehicle components must be removed for proper cable routing.
3. Pick a suitable location near the battery to secure the fuse holder. Remember, the short length of wire between the fuse holder and battery ring terminals are the only part of the cable that is not protected by the fuse. Be sure the wires are routed according to the cautions listed below. Routing the wires along the vehicle battery cables may give added protection. If in doubt, cover the wires with short lengths of corrugated loom. Secure the fuse holder with a cable tie.
4. Begin securing the cable to the vehicle. If the cable crosses the steering axis, secure

3BR Powersports, LLC

PO Box 2798

Saratoga, CA 95070

www.3brpowersports.com

Patent Pending

that part first. Install a cable tie close to the steering axis. Pull the cable tie only tight enough to snug the cable but still allow it to move if necessary. Test the steering and control functions to be sure the cable does not interfere in any way. Adjust the cable if necessary. Tighten the cable tie.



CAUTION

- Keep cables at least 3" (75mm) away from any hot engine components and at least 6" (150mm) away from any hot exhaust components.
 - Do not allow the cable to touch any sharp edges that might chafe the cable jacket.
 - Protect the cable with protective loom at any point where it passes through the frame or bodywork of the vehicle. Durable corrugated loom is readily available from auto parts stores or on the 3BR Powersports website (Accessories).
 - Be sure that the cable does not interfere with vehicle steering or controls.
5. Continue securing the cable along its length. Loop excess cable near the fuse holder end and secure with a cable tie.
 6. Double check the cable routing using the Caution list above as a guide.
 7. Plug the Baryl Panel Socket into the cable.
 8. WEAR SAFETY GLASSES WHEN ATTACHING THE BATTERY CABLES. Attach the RED positive (+) wire to the battery positive (+) terminal.
 9. Refer to the vehicle service manual to replace any vehicle components that may have been removed in order to route the cable leaving off only those parts necessary for battery access.
 10. Attach the BLACK negative (-) wire to a clean, grounded chassis bolt near the battery. If a suitable bolt is not available, the BLACK negative (-) wire can be attached along with the negative (-) battery cable to the battery. Connect the negative (-) battery cable.
 11. If you have your Baryl Plug™ assembled and ready to use, now is a good time to test the installation. Plug the Baryl Plug into the Baryl Socket and operate the accessory as you normally would.
 12. Refer to the vehicle service manual to replace any vehicle components removed for battery access.
 13. ENJOY YOUR Baryl™ POWER PORT!

The Baryl Power Port system is splash proof (International protection rating of IP64) as long as either the protective cover is in place when not in use or the Baryl Plug is in place when in use. Be sure to take advantage of this feature by keeping either the cap or the Baryl Plug in place at all times.

What's with the extra ring on the seal cap? It's a flopper-stopper. Place the Baryl Plug through the ring when plugging it in and it will prevent the seal cap from flopping around and damaging the panel surfaces.



3BR Powersports, LLC

PO Box 2798

Saratoga, CA 95070

www.3brpowersports.com

Patent Pending

BARYL SOCKET COMPATIBLE CABLES AND PLUGS

Baryl Cables for Garmin™ GPS

These cables are made from genuine Garmin cables terminated with 3BR Powersports Baryl Plugs.



Visit

WWW.3BRPOWERSPORTS.COM

For details and pricing



FITS GARMIN TRAIL 4-PIN ROUND

Length	Part Number
9 IN	150-0032-09
12 IN	150-0032-12
18 IN	150-0032-18

FITS GARMIN ZUMO® 450 & 550

Length	Part Number
9 IN	150-0033-09
12 IN	150-0033-12
18 IN	150-0033-18



Fits Garmin ZUMO® 660 & 665

Here is the answer to switching your Garmin ZUMO 660 or 665 GPS between vehicles without having to have multiple cradle/wire harness assemblies.

This power cable has a 3BR Powersports Baryl plug integrated with a genuine Garmin ZUMO cradle and wiring harness.

Part Number 150-0041-01

Universal Baryl Plug Kits for Homebrew applications

Want to save some money and use your existing 12V accessory power cable? With these Baryl plugs you can terminate your power cable either our no-tools-required pigtail or our solder plug.

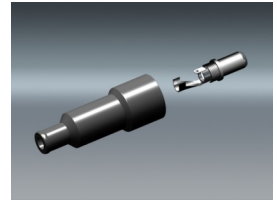


Baryl Pigtail Plug
PN 150-0028-01

How to choose the right plug kit.

If you have reasonably good soldering skills and tools then the Solder Plug is what you want. It makes a cleaner termination just like the factory 3BR powersports cables.

No soldering skills or tools? Choose the pigtail plug. This kit uses heat shrink/solder connections that can be made with a candle or cigarette lighter.



Baryl Solder Plug
PN 150-0029-01

Garmin® and ZUMO™ are trademarks of Garmin Ltd, or its subsidiaries

3BR Powersports, LLC

PO Box 2798

Saratoga, CA 95070

www.3brpowersports.com

Patent Pending